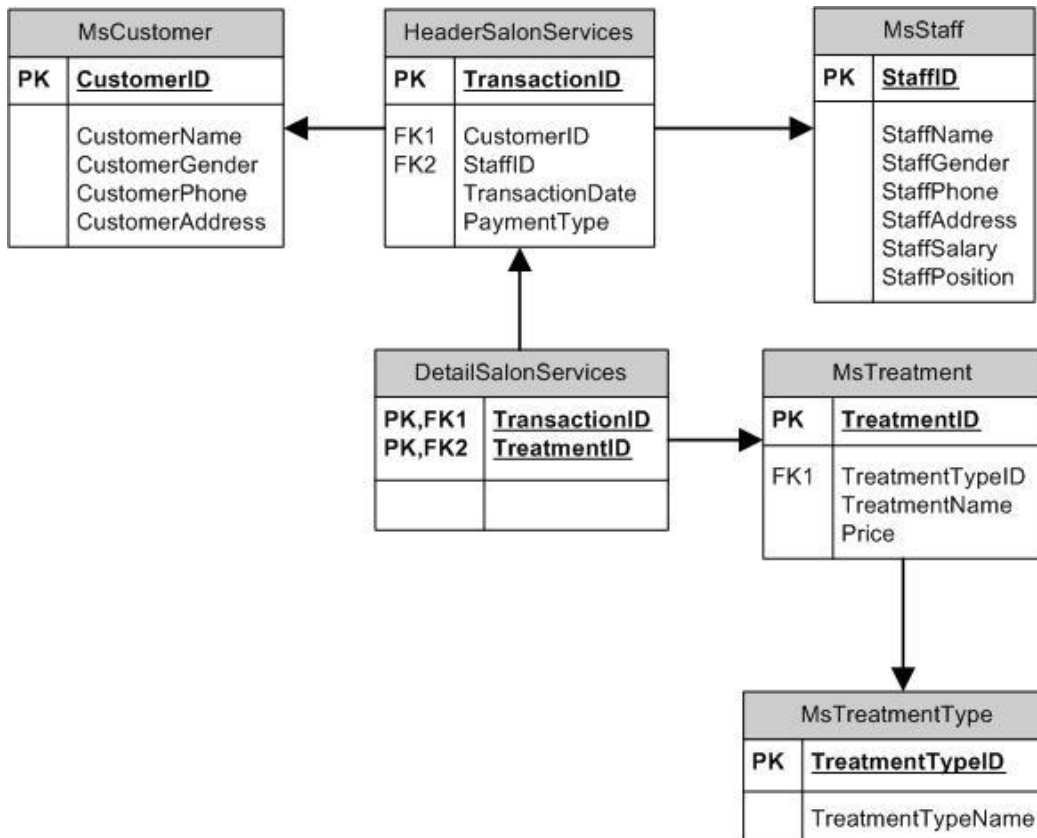


Tabel Relasional



1. Display all female staff's data from MsStaff.

(select)

Jawab:

```
select *
from MsStaff
where StaffGender = 'Female'
```

2. Display TreatmentName, and Price for every treatment which type is 'message / spa' or 'beauty care'.

(in)

Jawab:

```
select TreatmentName, Price
from MsTreatment m, MsTreatmentType mt
where m.TreatmentTypeID = mt.TreatmentTypeID and TreatmentTypeName in ('message
/ spa', 'beauty care');
```

3. Display Name (obtained by taking the first character of customer's name until character before space), Gender (obtained from first character of customer's gender), and PaymentType for every transaction that is paid by 'Debit'.

(substring, charindex, left)

Jawab:

```
select SUBSTRING(m.CustomerName, 0, CHARINDEX(' ',m.CustomerName)) as Name,  
Left(m.CustomerGender,1) as Gender, PaymentType  
from MsCustomer m, HeaderSalonServices h  
where m.CustomerId = h.CustomerId and PaymentType = 'Debit'
```

4. Menampilkan buku terbitan 5 tahun terakhir dari tahun 2020.

Jawab:

$\Pi (\sigma \text{ Year} \geq 2015(\text{Book}))$

5. Menampilkan detail customer yang pernah melakukan shopping, dengan menggunakan Join operator.

Jawab:

$\Pi (\text{Customer}) \bowtie \Pi (\text{ShoppingBasket})$